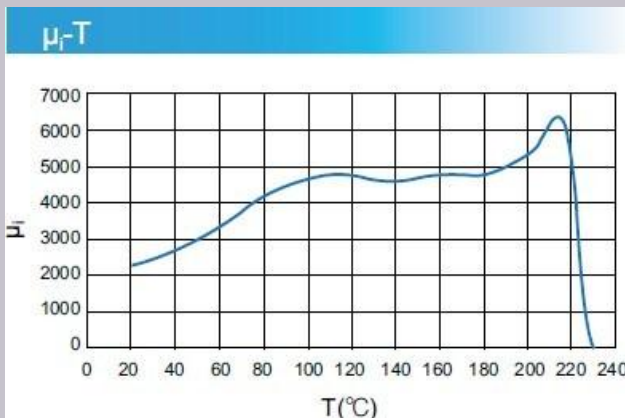
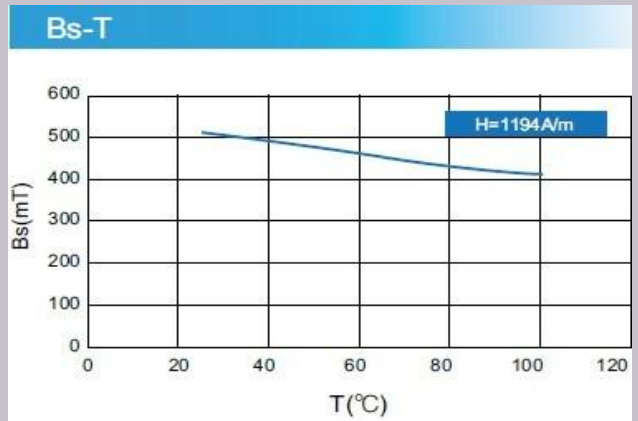
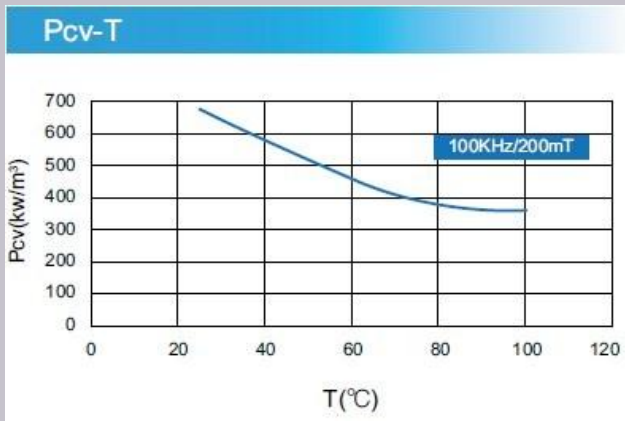


# LC40

特点：主要应用于中频段（小于200kHz） Features: Mostly Used at Middle Frequency (Less than 200kHz)  
 低磁芯损耗，高饱和磁通密度 Loss Core and High Saturation Magnetic Flux Density  
 损耗最低的温度点约在90℃ The Temperature Point of the Lowest Core Loss is 90℃

Initial permeability	$\mu_{iac}$		25℃	2300±25%
Core loss (100kHz,200mT)	P <sub>cv</sub>	Kw/m <sup>3</sup>	25℃	650
			60℃	/
			80℃	410
			100℃	410
Saturation flux density (1194A/m)	B <sub>s</sub>	mT	25℃	510
			100℃	390
Remanence	B <sub>r</sub>	mT	25℃	110
			100℃	55
Coercivity	H <sub>c</sub>	A/m	25℃	14
			100℃	10
Curie temperature	T <sub>c</sub>	℃	≥215	
Density	d	Kg/m <sup>3</sup>	4.8×10 <sup>3</sup>	
Resistivity	ρ	Ω·m	6	

Note: 1) Typical values  
 2) The values were obtained with toroidal cores(30×8–20H) at room temperature unless indicated otherwise



# LC44

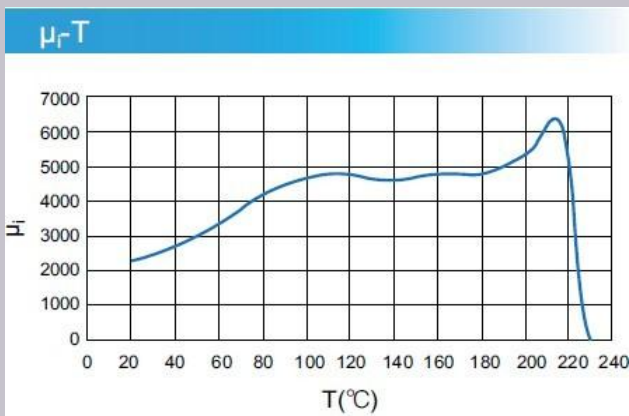
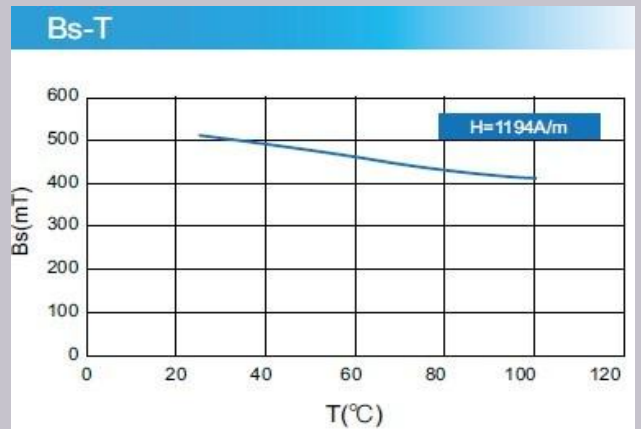
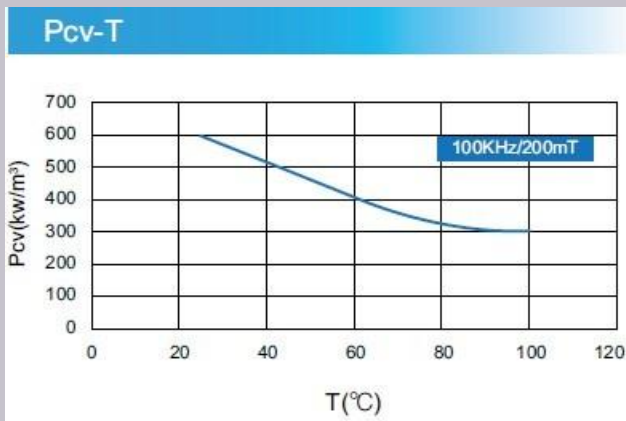
特点：主要应用于中频段（小于300kHz）  
低磁芯损耗，高饱和磁通密度  
损耗最低的温度点约在90℃

Features: Mostly Used at Middle Frequency (Less than 300kHz)  
Loss Core and High Saturation Magnetic Flux Density  
The Temperature Point of the Lowest Core Loss is 90℃

Initial permeability	$\mu_{iac}$		25℃	2400±25%
Core loss (100kHz,200mT)	P <sub>cv</sub>	Kw/m <sup>3</sup>	25℃	600
			60℃	/
			80℃	/
			100℃	300
Saturation flux density (1194A/m)	B <sub>s</sub>	mT	25℃	510
			100℃	390
Remanence	B <sub>r</sub>	mT	25℃	110
			100℃	60
Coercivity	H <sub>c</sub>	A/m	25℃	13
			100℃	7
Curie temperature	T <sub>c</sub>	℃	≥215	
Density	d	Kg/m <sup>3</sup>	4.8×10 <sup>3</sup>	
Resistivity	ρ	Ω·m	6.5	

Note: 1) Typical values

2) The values were obtained with toroidal cores(30×8–20H) at room temperature unless indicated otherwise



# LC95

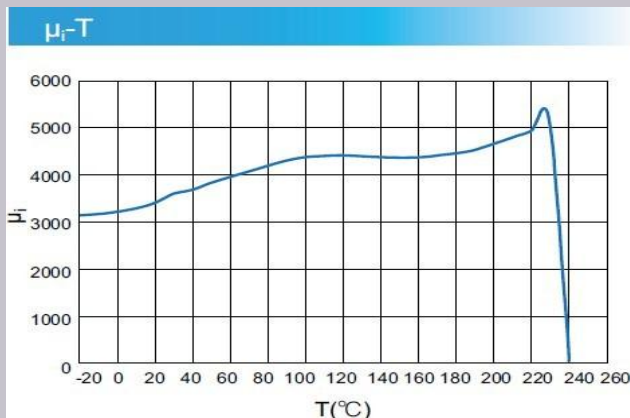
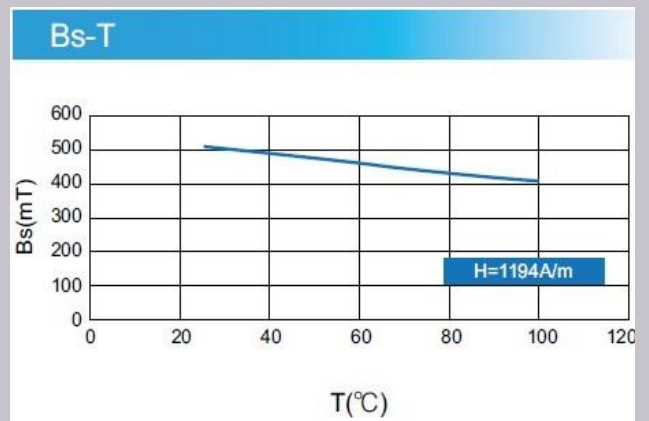
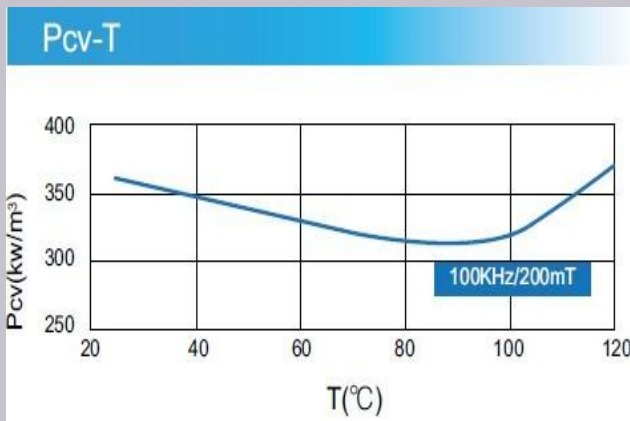
特点：宽温度低损耗  
高饱和磁通密度

Features: Loss Core in a Wide Temperature Ranges  
High Saturation Magnetic Flux Density

Initial permeability	$\mu_{iac}$		25℃	3200±25%
Core loss (100kHz,200mT)	P <sub>cv</sub>	Kw/m <sup>3</sup>	25℃	450
			80℃	350
			100℃	380
			120℃	430
Saturation flux density (1194A/m)	B <sub>s</sub>	mT	25℃	510
			100℃	390
Remanence	B <sub>r</sub>	mT	25℃	50
			100℃	55
Coercivity	H <sub>c</sub>	A/m	25℃	8
			100℃	9
Curie temperature	T <sub>c</sub>	℃	≥220	
Density	d	Kg/m <sup>3</sup>	4.8×10 <sup>3</sup>	
Resistivity	ρ	Ω·m	-	

Note: 1) Typical values

2) The values were obtained with toroidal cores(30×8–20H) at room temperature unless indicated otherwise



## R5K

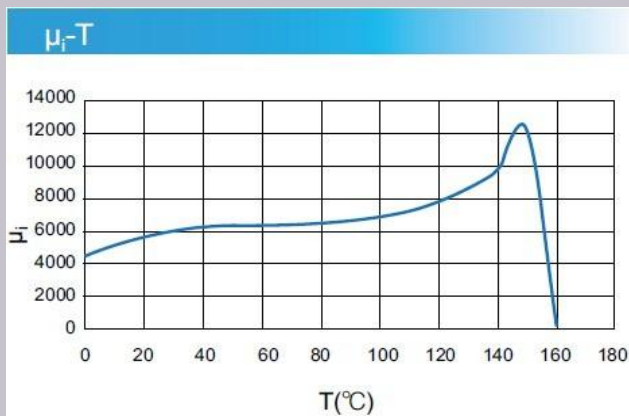
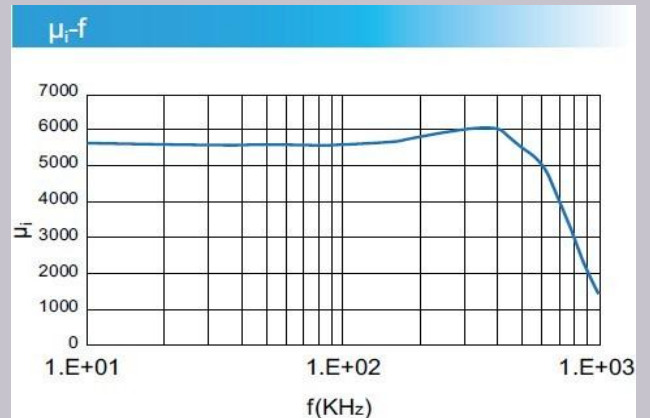
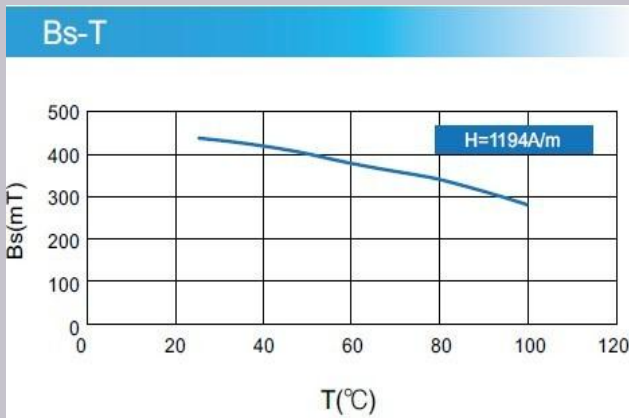
特点：高磁导率（约5500）  
低比损耗因子  
频率特性优良

Features: High Initial Permeability (about 5500)  
Low Relative Loss Factor  
The Initial Permeability Vs Frequency is Good

Initial permeability	$\mu_{iac}$		25°C	5500±25%
Relative loss factor	$\text{Tan}\delta/\mu_i$	$\times 10^{-6}$	100KHz	< 10
Relative temperature coefficient	$\alpha_{\mu ir}$	$\times 10^{-6}/^\circ\text{C}$	20~60°C	-0.5~2.0
Disaccommodation factor	$D_f$	$\times 10^{-6}$	1~10min	<3
Saturation flux density (1194A/m)	$B_s$	mT	25°C	410
Remanence	$B_r$	mT	25°C	70
Coercivity	$H_c$	A/m	25°C	6
Curie temperature	$T_c$	°C		≥150
Density	$d$	Kg/m <sup>3</sup>		$4.8 \times 10^3$
Resistivity	$\rho$	$\Omega \cdot \text{m}$		1

Note: 1) Typical values

2) The values were obtained with toroidal cores(30×8–20H) at room temperature unless indicated otherwise



## R7K

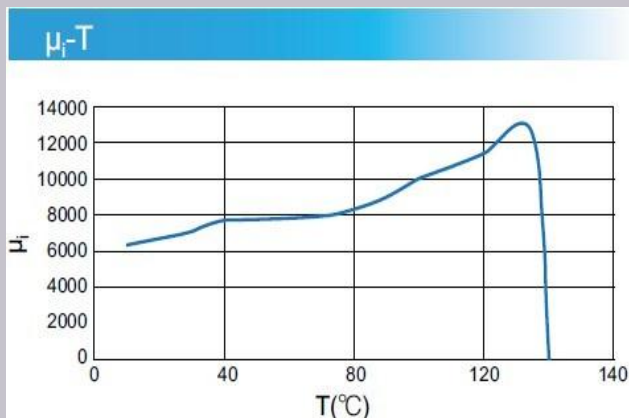
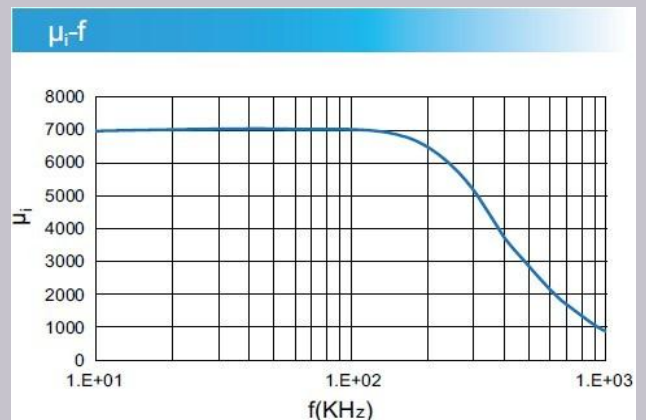
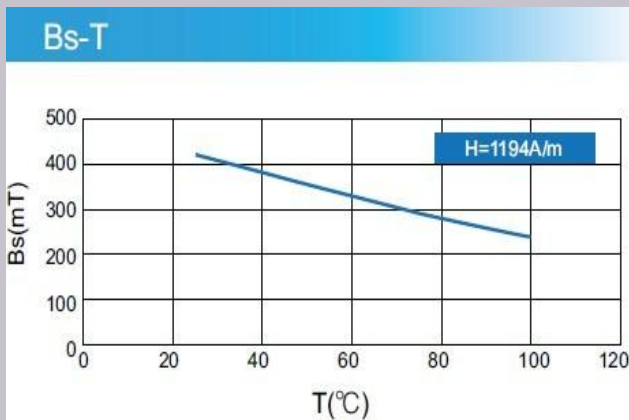
特点：高磁导率（约7000）  
低比损耗因子  
频率特性优良

Features: High Initial Permeability (about 7000)  
Low Relative Loss Factor  
The Initial Permeability Vs Frequency is Good

Initial permeability	$\mu_{iac}$		25°C	7000±25%
Relative loss factor	$\text{Tan}\delta/\mu_i$	$\times 10^{-6}$	100KHz	< 20
Relative temperature coefficient	$\alpha_{\mu ir}$	$\times 10^{-6}/^\circ\text{C}$	20~60°C	-0.5~2.0
Disaccommodation factor	$D_f$	$\times 10^{-6}$	1~10min	<2.5
Saturation flux density (1194A/m)	$B_s$	mT	25°C	410
Remanence	$B_r$	mT	25°C	80
Coercivity	$H_c$	A/m	25°C	6
Curie temperature	$T_c$	°C		≥130
Density	$d$	Kg/m <sup>3</sup>		$4.8 \times 10^3$
Resistivity	$\rho$	$\Omega \cdot \text{m}$		0.3

Note: 1) Typical values

2) The values were obtained with toroidal cores(30×8~20H) at room temperature unless indicated otherwise



## R10K

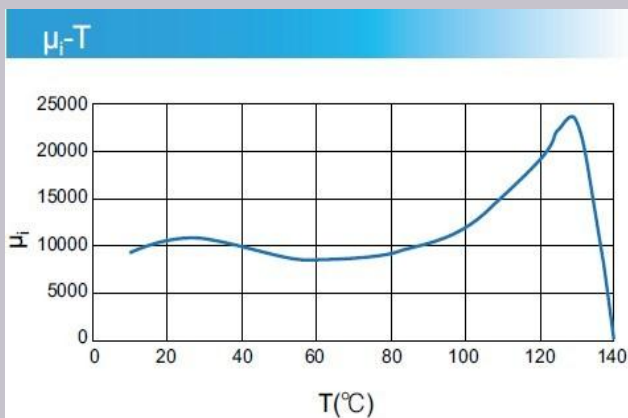
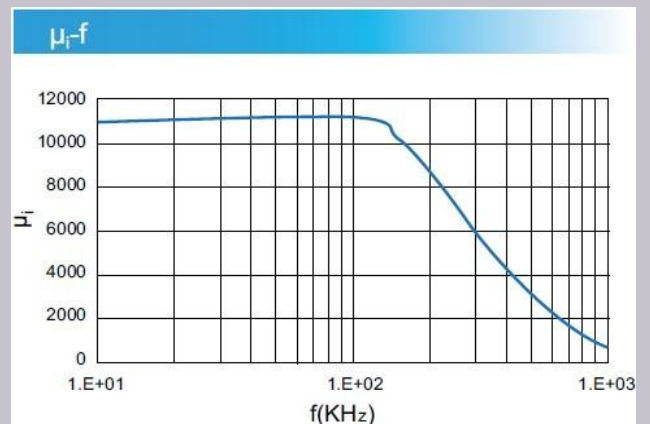
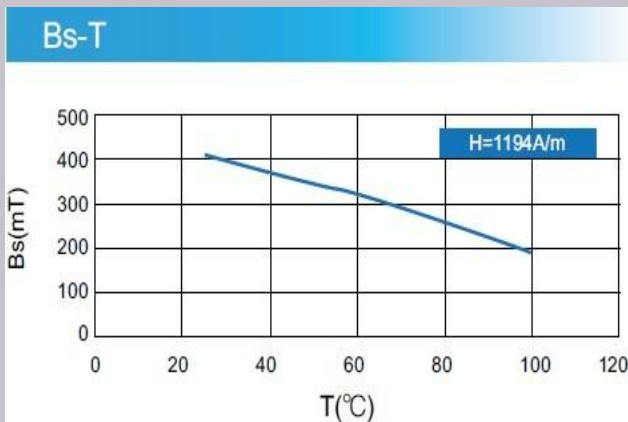
特点：高磁导率 (约10000)  
低比损耗因子  
频率特性优良

Features: High Initial Permeability (about 10000)  
Low Relative Loss Factor  
The Initial Permeability Vs Frequency is Good

Initial permeability	$\mu_{iac}$		25°C	10000±25%
Relative loss factor	$\text{Tan}\delta/\mu_i$	$\times 10^{-6}$	100KHz	< 30
Relative temperature coefficient	$\alpha_{\mu ir}$	$\times 10^{-6}/^\circ\text{C}$	20~60°C	-0.5~2.0
Disaccommodation factor	$D_i$	$\times 10^{-6}$	1~10min	<2
Saturation flux density (1194A/m)	$B_s$	mT	25°C	380
Remanence	$B_r$	mT	25°C	110
Coercivity	$H_c$	A/m	25°C	6
Curie temperature	$T_c$	°C		≥120
Density	$d$	Kg/m <sup>3</sup>		$4.9 \times 10^3$
Resistivity	$\rho$	Ω·m		0.2

Note: 1) Typical values

2) The values were obtained with toroidal cores(30×8–20H) at room temperature unless indicated otherwise



## R12K

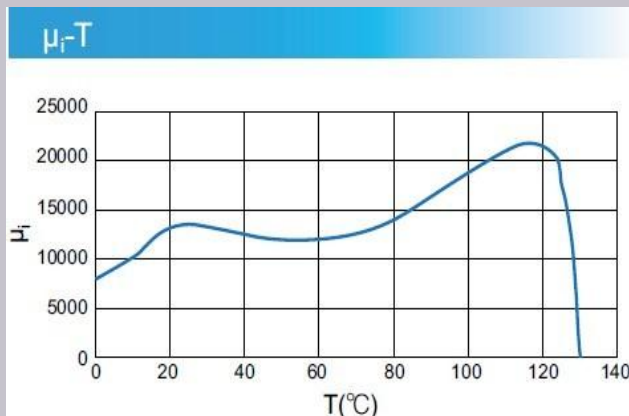
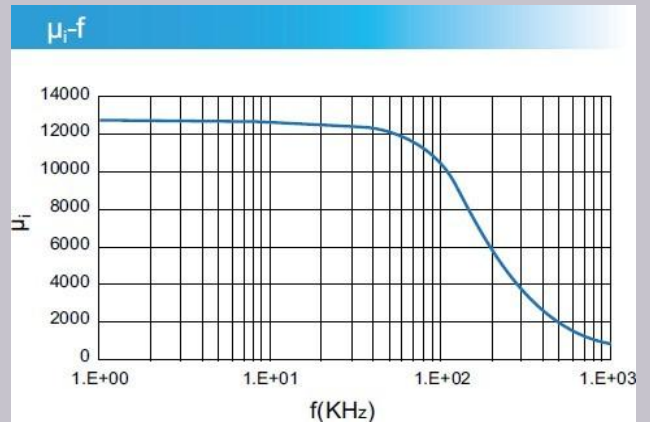
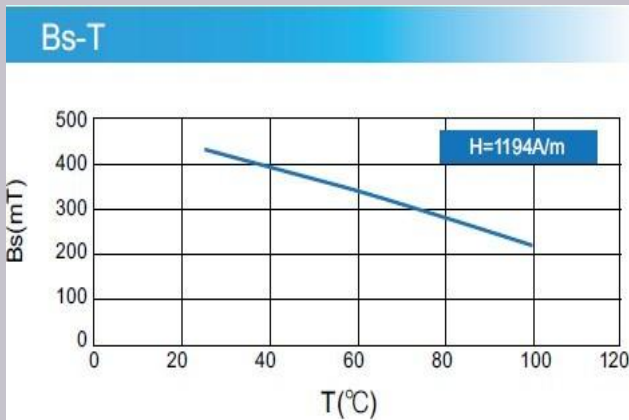
特点：高磁导率 (约12000)

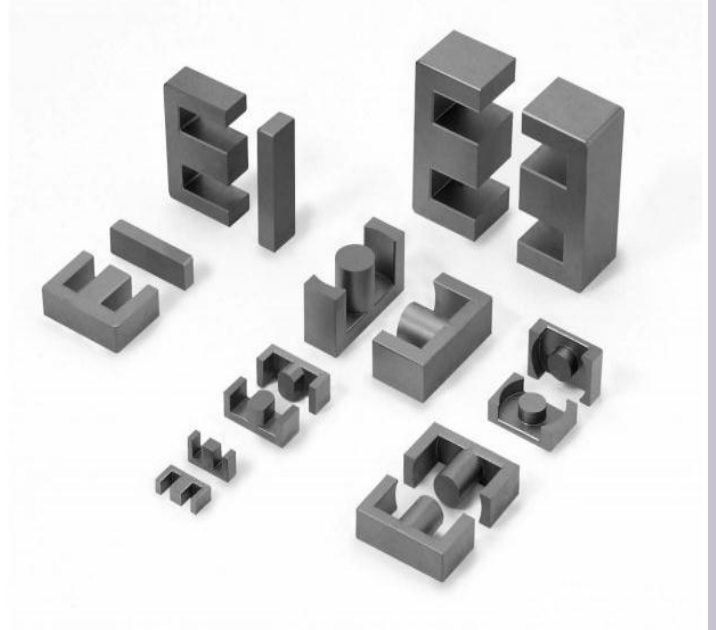
Features: High Initial Permeability (about 12000)

Initial permeability	$\mu_{iac}$		25°C	12000±25%
Relative loss factor	$\text{Tan}\delta/\mu_i$	$\times 10^{-6}$	10KHz	< 7
Relative temperature coefficient	$\alpha_{\mu ir}$	$\times 10^{-6}/^\circ\text{C}$	20~60°C	-0.5~2.0
Disaccommodation factor	$D_f$	$\times 10^{-6}$	1~10min	<2
Saturation flux density (1194A/m)	$B_s$	mT	25°C	380
Remanence	$B_r$	mT	25°C	110
Coercivity	$H_c$	A/m	25°C	5
Curie temperature	$T_c$	°C		≥110
Density	$d$	Kg/m <sup>3</sup>		$4.95 \times 10^3$
Resistivity	$\rho$	Ω·m		0.15

Note: 1) Typical values

2) The values were obtained with toroidal cores(30×8~20H) at room temperature unless indicated otherwise





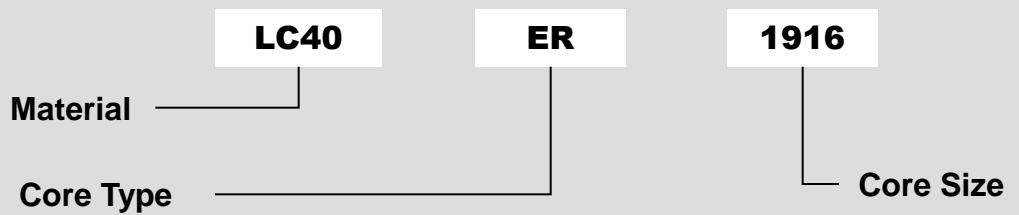
## E CORES

EE10~EE70

ER/EQ09~ER42

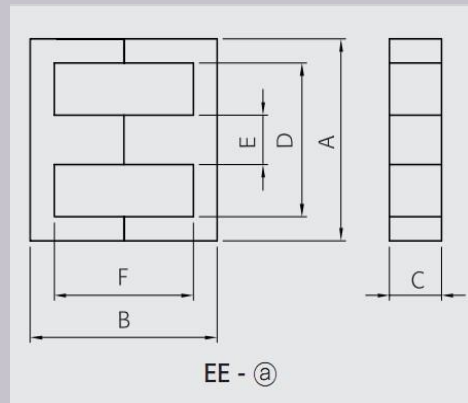
EED28~EED40

Ordering Code System





# EE CORES

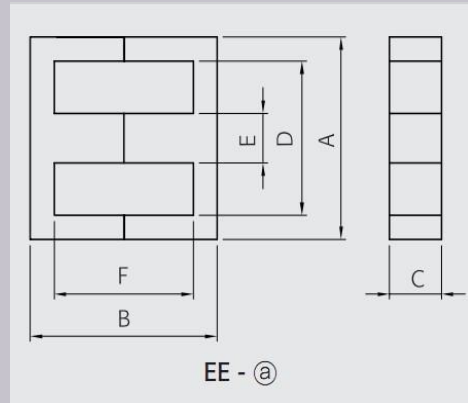
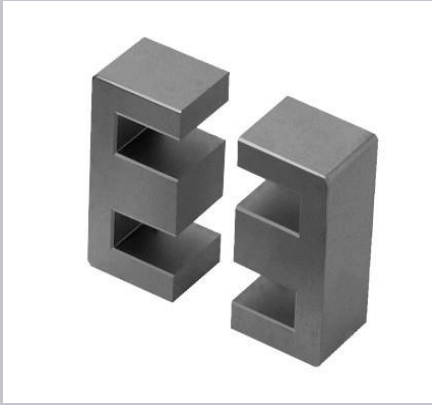


Part NO.	Type	A	B/2	C	D	E	F/2
EE1011	EE-@	10.20±0.25	5.60±0.20	4.80±0.20	7.70min	2.40±0.20	4.30±0.20
EE1011/7	EE-@	10.20±0.25	5.60±0.20	7.00±0.20	7.70min	2.40±0.20	4.30±0.20
EE1011/10	EE-@	10.20±0.25	5.60±0.20	9.80±0.25	7.70min	2.40±0.20	4.30±0.20
EE1111	EE-@	11.10±0.25	5.60±0.20	4.80±0.20	8.20min	2.40±0.20	4.30±0.20
EE1111/7	EE-@	11.20±0.25	5.60±0.20	7.00±0.20	8.20min	2.40±0.20	4.30±0.20
EE1111/10	EE-@	11.20±0.25	5.60±0.20	9.8±0.25	8.20min	2.40±0.20	4.30±0.20
EE1312	EE-@	13.10±0.30	6.30±0.20	5.90±0.20	10.00min	2.70±0.20	4.90±0.20
EE1312/7	EE-@	13.00±0.30	6.35±0.20	7.00±0.15	10.20min	2.70±0.20	4.95±0.15
EE1312/5.9	EE-@	13.20±0.30	6.00±0.20	5.90±0.20	10.00min	2.70±0.20	4.80±0.20
EE1313/10	EE-@	13.10±0.30	6.75±0.20	9.80±0.20	9.05min	3.50±0.20	4.90±0.20
EE1510	EE-@	15.30±0.30	4.90±0.20	12.0±0.15	12.00min	3.40±0.20	3.20±0.10
EE1610	EE-@	16.00±0.30	4.40±0.20	9.90±0.320	11.70min	4.15±0.15	2.40±0.15
EE1614	EE-@	16.00±0.40	7.30±0.20	4.80±0.20	11.80min	4.00±0.30	5.30±0.20
EE16/6.8	EE-@	16.10±0.40	8.05±0.20	6.80±0.20	12.20min	4.50±0.20	5.90±0.15
EE16/7.8	EE-@	16.10±0.40	8.05±0.20	7.80±0.21	12.20min	4.50±0.20	5.90±0.15
EE16.5/4.8	EE-@	16.50±0.40	7.60±0.20	4.80±0.20	12.20min	4.50±0.20	5.40±0.20
EE16.5/5.0	EE-@	16.50±0.40	7.60±0.20	4.90±0.20	12.20min	4.50±0.20	5.40±0.20
EE16.5/6.8	EE-@	16.50±0.40	7.60±0.20	6.80±0.25	12.20min	4.50±0.20	5.40±0.20
EE16.5/7.0	EE-@	16.50±0.40	7.60±0.20	7.00±0.25	12.20min	4.50±0.20	5.40±0.20
EE17.3	EE-@	17.40±0.25	7.45±0.15	6.00±0.15	13.20min	5.50±0.15	5.45±0.20
EE17.4/ 6.3	EE-@	17.40±0.30	7.60±0.15	6.3±0.2	13.10min	5.50±0.15	5.5±0.15
EE1916	EE-@	19.10±0.40	8.20±0.20	4.65±0.20	14.20min	4.55±0.20	5.90±0.20

# EE CORES

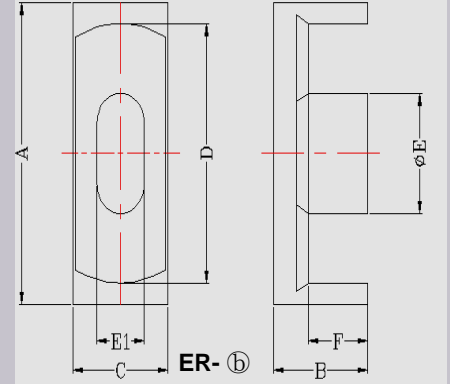
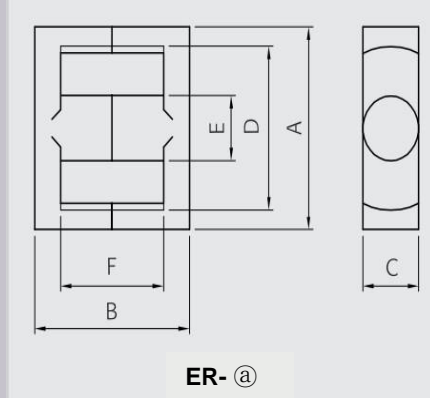
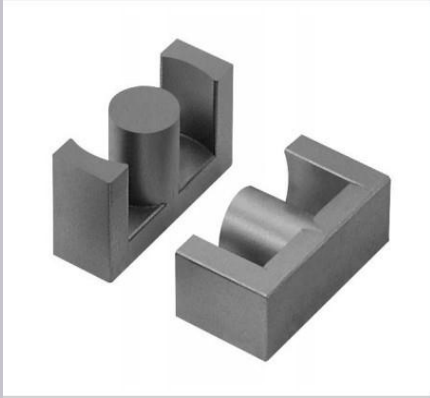
Part NO.	Type	A	B/2	C	D	E	F/2
EE19W	EE- Ⓐ	19.10±0.30	8.30±0.20	10.0±0.20	14.30min	4.50±0.2 0	6.10±0.2 0
EE19/16 B	EE- Ⓐ	19.10±0.30	8.00±0.20	10.0±0.20	14.20min	4.75±0.2 0	5.70±0.2 0
EE19/18	EE- Ⓐ	19.10±0.50	9.90±0.20	5.00±0.20	14.10min	4.55±0.2 5	7.70±0.2 0
EE19/9. 6	EE- Ⓐ	19.10±0.30	8.30±0.20	9.60±0.20	14.20min	4.50±0.2 0	5.90±0.2 0
EE19/15	EE- Ⓐ	19.10±0.30	7.55±0.10	7.55±0.10	14.50±0. 30	4.85±0.2 5	5.25±0.1 0
EE20.3	EE- Ⓐ	20.30±0.30	5.80±0.15	10.70±0.15	14.80min	5.70±0.1 5	3.30±0.1 5
EE2017	EE- Ⓐ	20.00±0.30	8.50±0.15	5.70±0.20	14.10min	5.70±0.1 5	5.80±0.2 0
EE2018	EE- Ⓐ	20.20±0.40	9.10±0.10	10.60±0.20	14.80min	5.70±0.2 0	6.30±0.2 0
EE2118	EE- Ⓐ	20.90±0.30	9.10±0.10	10.60±0.20	15.00min	5.70±0.1 5	6.30±0.1 5
EE2219	EE- Ⓐ	22.00±0.40	9.65±0.20	5.70±0.20	15.60min	5.70±0.2 0	5.85±0.2 0
EE22W	EE- Ⓐ	22.20±0.30	9.25±0.15	8.60±0.20	16.10min	5.70±0.2 0	5.50±0.2 0
EE22W-A	EE- Ⓐ	22.20±0.30	9.45±0.15	8.60±0.20	16.10min	5.90±0.2 0	5.70±0.2 0
EE2330	EE- Ⓐ	23.20±0.40	14.90±0.15	5.75±0.20	17.50min	5.75±0.2 0	11.2±0.2 0
EE2519	EE- Ⓐ	25.50±0.50	9.65±0.20	6.30±0.20	18.80min	6.30±0.2 0	6.40±0.2 0
EE2520	EE- Ⓐ	25.40±0.50	10.05±0.15	6.30±0.20	18.50min	6.30±0.2 0	6.90±0.2 0
EE2532	EE- Ⓐ	25.30±0.50	16.00±0.15	6.35±0.20	19.10min	6.50±0.2 0	12.70±0. 20
EF2521	EE- Ⓐ	25.05±0.55	10.45±0.20	7.20±0.30	17.50min	7.20±0.3 0	6.90±0.2 0
EE2620	EE- Ⓐ	25.95±0.40	9.65±0.20	6.30±0.20	19.75±0. 30	6.30±0.2 0	6.40±0.1 5
EE2820	EE- Ⓐ	28.00±0.50	10.10±0.20	11.00±0.20	19.60min	7.30±0.2 0	6.60±0.2 0
EE2821	EE- Ⓐ	28.00±0.50	10.50±0.20	10.60±0.20	19.60min	7.30±0.2 0	6.90±0.2 0
EED28	EE- Ⓐ	28.00±0.50	10.10±0.20	12.00±0.20	20.00min	7.40±0.2 0	6.40±0.2 0

# EE CORES



Part NO.	Type	A	B/2	C	D	E	F/2
EE3232	EE- ②	32.10 ± 0.50	16.10 ± 0.20	9.15 ± 0.25	22.70min	9.20 ± 0.25	11.50 ± 0.20
EE4220	EE- ②	42.00 ± 0.70	21.25 ± 0.25	20.00 ± 0.20	29.50min	11.95 ± 0.25	15.25 ± 0.25
EE5525	EE- ②	55.15 ± 1.05	27.60 ± 0.20	24.70 ± 0.35	37.50min	16.95 ± 0.30	18.90 ± 0.20
EE5521	EE- ②	55.15 ± 1.05	27.60 ± 0.20	20.80 ± 0.35	37.50min	16.95 ± 0.30	18.90 ± 0.20
EE6565	EE- ②	65.15 ± 1.35	32.60 ± 0.20	27.00 ± 0.40	44.20min	19.65 ± 0.30	22.70 ± 0.20
EE7066	EE- ②	70.00 ± 1.05	33.00 ± 0.20	31.60 ± 0.30	47.90min	21.50 ± 0.40	22.20 ± 0.20

# ER CORES



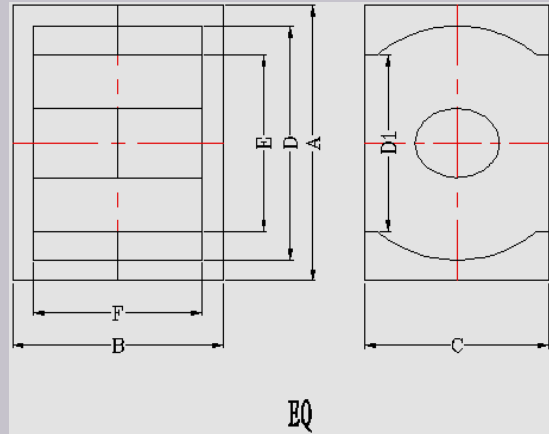
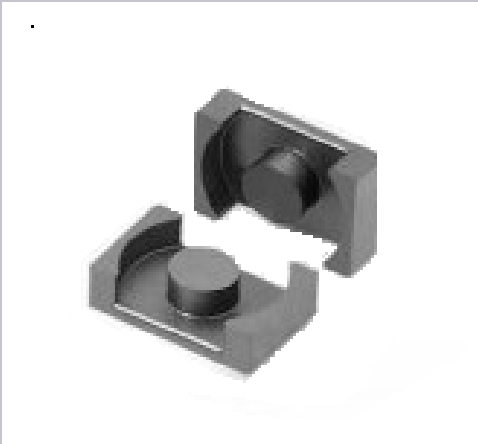
Part NO.	Type	A	B/2	C	Dmin	E	F/2
ER0905	ER-Ⓐ	9.35±0.20	2.45±0.10	4.90±0.25	7.50	3.40±0.20	1.70±0.15
ER1105	ER-Ⓐ	10.85±0.25	2.45±0.10	5.90±0.25	8.70	4.15±0.20	1.60±0.16
ER1406	ER-Ⓐ	14.50±0.30	2.95±0.15	6.75±0.25	11.60	4.75±0.20	1.70±0.35
ER1916	ER-Ⓐ	19.00±0.35	8.05±0.20	5.10±0.20	14.20	5.05±0.20	5.65±0.15
ER2510	ER-Ⓐ	25.50±0.30	5.60±0.20	10.00±0.30	18.50	8.20±0.20	3.30±0.20
ER2519	ER-Ⓐ	25.50±0.50	9.50±0.15	10.00±0.30	19.50	7.40±0.25	6.40±0.15
ER2921	ER-Ⓐ	29.50±0.50	10.60±0.15	11.40±0.30	22.20	9.90±0.25	7.00±0.20
ER3124	ER-Ⓐ	31.50±0.50	12.2±0.15	20.30±0.30	26.90±0.40	13.30±0.20	9.20±0.15
ER3517	ER-Ⓐ	35.20±0.50	8.50±0.15	12.50±0.35	27.70±0.50	12.00±0.30	4.75±0.15
ER3916	ER-Ⓐ	39.00±0.50	7.85±0.15	12.50±0.35	31.65±0.35	12.00±0.30	4.30±0.15
ER4233	ER-Ⓐ	42.00±0.80	16.50±0.30	19.60±0.40	32.80±0.50	17.30±0.25	10.50±0.2

Part NO.	Type	A	B/2	C	Dmin	E	E <sub>1</sub>	F/2
ER2010	ER-Ⓑ	20.50±0.40	5.05±0.15	9.90±0.20	16.50	7.90±0.20	5.9±0.2	3.05±0.15
ER33/10	ER-Ⓑ	32.50±0.50	5.15±0.15	11.35±0.25	26.50	14.10±0.25	5.0±0.2	2.85±0.20

Type: 1)ER2010,ER3310—ER-Ⓑ

2 )Others—ER-Ⓐ

# EQ CORES

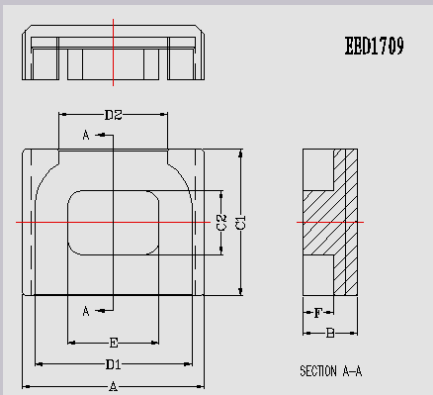
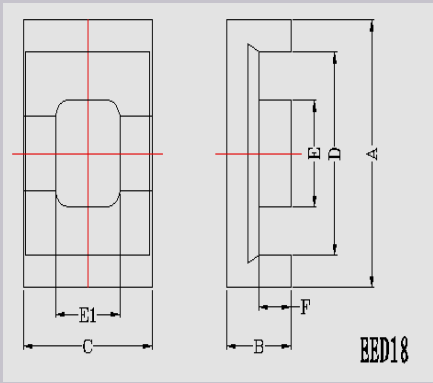
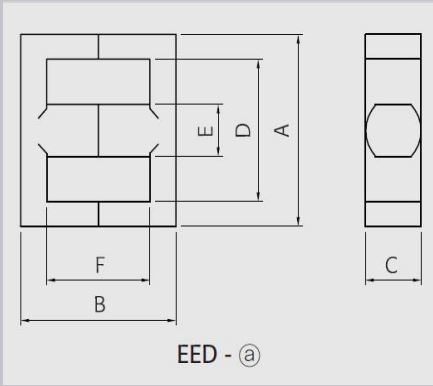
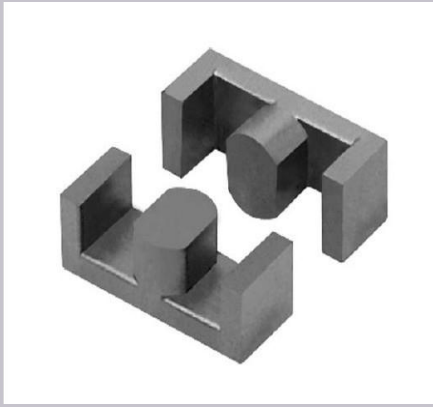


EQ

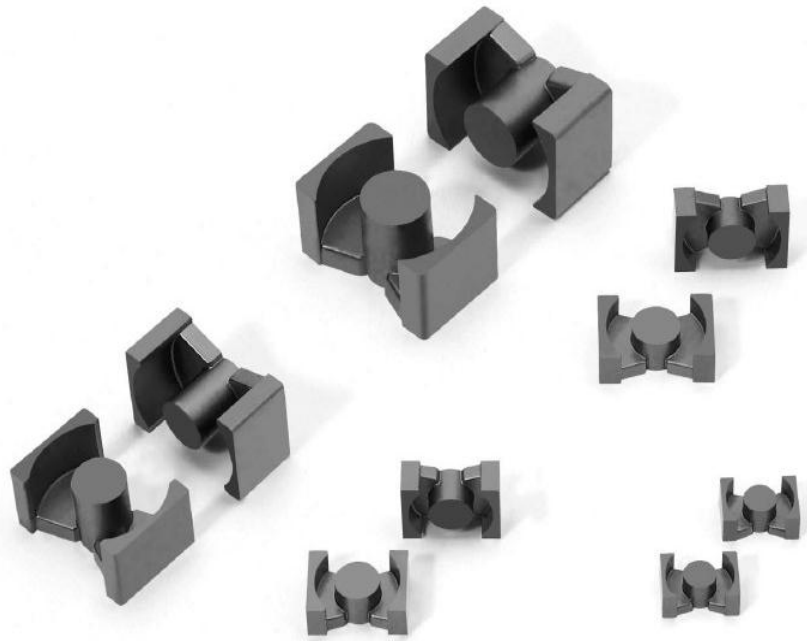
Part NO.	Type	A	B/2	C	D	D <sub>1</sub>	E	F/2
EQ2613	EQ	26.30 ±0.30	6.60+0.20 /-0.15	17.50 ±0.30	22.05min	16.60min	11.20 ±0.30	4.20+0.20 /-0.15
EQ2713	EQ	27.00 ±0.40	6.60+0.20 /-0.15	17.50 ±0.30	23.00min	17.2min	11.20 ±0.30	4.20+0.20 /-0.15
EQ3013	EQ	30.0 ±0.40	6.70 ±0.25	20.00 ±0.30	25.6min	19.62min	11.00 ±0.20	4.00 ±0.20
EQ3015	EQ	30.00 ±0.40	7.70 ±0.25	20.00 ±0.30	25.6min	19.62min	11.00 ±0.20	5.00 ±0.20
EQ3016	EQ	30.00 ±0.40	8.00 ±0.25	20.00 ±0.30	25.6min	19.62min	11.00 ±0.20	5.30 ±0.20
EQ3019	EQ	30.30 ±0.40	9.60 ±0.25	20.30 ±0.30	25.3min	21.62min	13.30 ±0.20	6.60 ±0.20
EQ3214	EQ	32.50 ±0.50	7.10 ±0.15	20.30 ±0.30	28.00 ±0.50	23.50 ±0.30	13.20 ±0.20	4.30 ±0.15
ER4020	EQ	40.00 ±0.50	10.50+0.15 /-0.20	32.50 ±0.45	36.30 ±0.50	30.00 ±0.50	19.00 ±0.25	6.50 ±0.25
EER4233	EQ	42.00 ±0.80	16.50 ±0.30	19.60 ±0.40	32.80 ±0.50		17.30 ±0.25	10.50 ±0.20
ER4624	EQ	45.80 ±0.60	11.90+0.25 /-0.20	32.50 ±0.40	40.00 ±0.50	35.20 ±0.50	20.00 ±0.25	6.90 ±0.20

**Note:** The type of the products listed above is EQ

# EED CORES



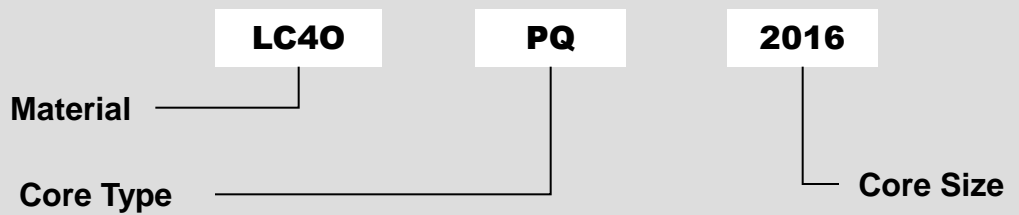
Part No.		EED18	EED1807	EED1709	EED28
Type		EED18	EED18	EED1709	EED-@
<b>Dimensions in mm</b>	<b>A</b>	18.40 ±0.40	17.80 ±0.30	17.40 ±0.30	28.00 ±0.50
	<b>B</b>	3.70 ±0.15	3.70 ±0.15	4.10 ±0.10	20.20 ±0.40
	<b>C</b>	12.10 ±0.30	12.10 ±0.30	14.50 ±0.25	12.00 ±0.20
	<b>D1</b>	15.40 ±0.40	14.90 ±0.30	14.75 ±0.25	20.00 min
	<b>D2</b>			9.60 ±0.20	
	<b>E</b>	7.70 ±0.20	7.30 ±0.15	7.90 ±0.15	7.40 ±0.20
	<b>E<sub>1</sub></b>	5.30 ±0.20	5.50 ±0.15	6.40 ±0.15	
	<b>F</b>	1.70 ±0.20	1.70 ±0.15	2.20 ±0.15	12.80 ±0.40



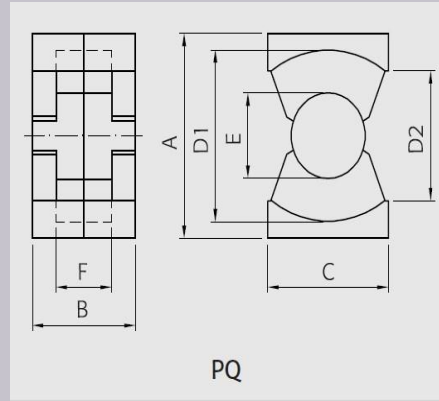
# PQ CORES

PQ20~PQ50

Ordering Code System



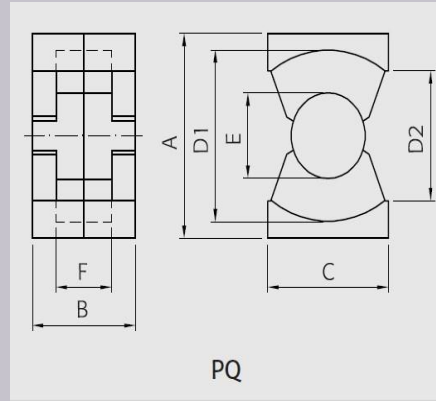
# PQ CORES



Part NO.	A	B	C	D	D <sub>1</sub>	E	F
PQ2016	20.50±0.40	8.20±0.15	14.00 ±0.40	18.00 ±0.40	12.5min	8.65±0.20	5.25±0.15
PQ2020	20.50±0.40	10.20±0.15	14.00 ±0.40	18.00 ±0.40	12.5min	8.65±0.20	7.30±0.15
PQ2120	21.50±0.40	10.20+0.20 /-0.10	14.00 ±0.30	18.50min	13.00min	8.65±0.15	7.30+0.20 /-0.10
PQ2116	21.50±0.40	8.20+0.20 /-0.10	14.00 ±0.30	18.50min	13.00min	8.65±0.15	5.25+0.20 /-0.10
PQ2620	26.50±0.45	10.20±0.15	19.00 ±0.45	22.80 ±0.45	15.50min	12.00±0.25	5.90±0.15
PQ2622	26.50±0.45	10.80±0.15	19.00 ±0.45	22.80 ±0.45	15.50min	12.00±0.25	7.20±0.20
PQ2625	26.50±0.45	12.50±0.15	19.00 ±0.45	22.80 ±0.45	15.50min	12.00±0.25	8.20±0.15
PQ2720	27.50±0.45	10.20±0.15	19.00 ±0.45	23.80 ±0.45	16.50min	12.00±0.25	5.90±0.20
PQ2720A	27.00±0.25	10.20±0.15	19.00 ±0.45	22.9min	17	12.00±0.25	5.90±0.20
PQ2725	27.50±0.45	12.50±0.15	19.00 ±0.45	23.80 ±0.45	16.50min	12.00±0.25	8.20±0.20
PQ2725A	27.00±0.25	12.50±0.25	19.00 ±0.45	22.9min	17	12.00±0.25	8.30±0.20
PQ3220G	32.00±0.50	10.35±0.15	22.00 ±0.50	27min	19	13.45±0.25	5.95±0.20
PQ3221G	32.00±0.50	10.75±0.15	22.00 ±0.50	27min	19	13.45±0.25	6.25±0.20
PQ3225G	32.00±0.50	12.70±0.15	22.00 ±0.50	27min	19	13.45±0.25	8.20±0.20
PQ3230G	32.00±0.50	15.25±0.15	22.00 ±0.50	27min	19	13.45±0.25	10.75±0.20



# PQ CORES



Part NO.	A	B	C	D	D <sub>1</sub>	E	F
PQ3220	32.50±0.50	10.20±0.15	22.00±0.50	27min	19.2min	13.45±0.25	5.95±0.20
PQ3221	32.50±0.50	10.75±0.15	22.00±0.50	27min	19.2min	13.45±0.25	6.25±0.20
PQ3225	32.50±0.50	12.70±0.15	22.00±0.50	27min	19min	13.45±0.25	8.20±0.20
PQ3230	32.50±0.50	15.25±0.15	22.00±0.50	27min	19min	13.45±0.25	10.75±0.20
PQ3235	32.50±0.50	17.60±0.15	22.00±0.50	27min	19min	13.45±0.25	13.10±0.20
PQ3526	35.10±0.60	13.20±0.15	26.00±0.50	31min	23.5min	14.35±0.35	8.30±0.20
PQ3535	35.10±0.60	17.60±0.15	26.00±0.50	31.5min	23.5min	14.35±0.30	12.70±0.20
PQ4020	40.50±0.90	10.20±0.15	28.00±0.60	36.4min	28min	14.90±0.35	5.10±0.20
PQ4040	40.50±0.90	20.00±0.15	28.00±0.60	36.4min	28min	14.90±0.35	14.90±0.20
PQ5045	50.00±0.70	22.60±0.15	32.00±0.60	43.7min	31.5min	20.0±0.35	15.70±0.20
PQ5050	50.00±0.70	25.10±0.15	32.00±0.60	43.3min	31.5min	20.0±0.35	18.20±0.20

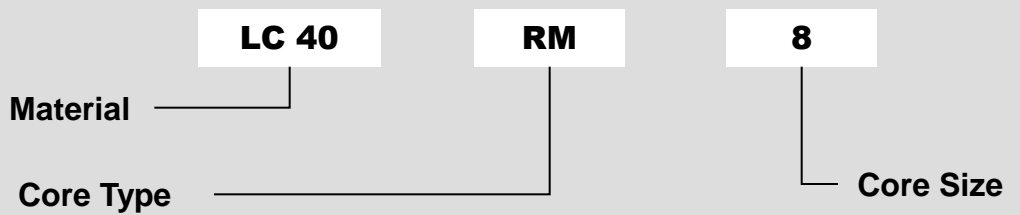
**Note:** The type of the products listed above is PQ



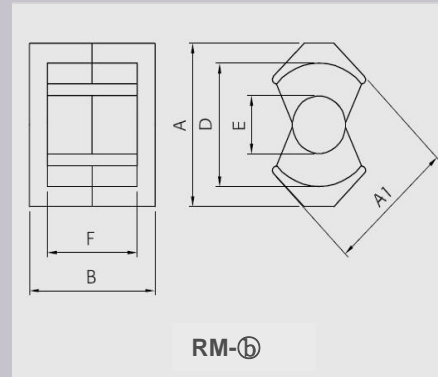
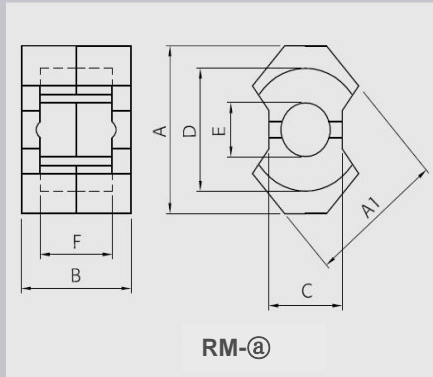
# RM CORES

RM6~RM12

## Ordering Code System



# RM CORES



Part NO.	A	B	C	A1	Dmin	D1min	E	F
RM6	18.60±0.35	6.40±0.20	8.00±0.20	15.20±0.30	13.45	9.3	6.30±0.20	4.30±0.15
RM6-12.5	18.70±0.35	6.00~6.25	8.00±0.20	15.20±0.30	13.35	9.3	6.30±0.20	4.10~4.35
RM8L	22.75±0.50	6.20±0.20	10.80±0.25	19.30±0.40	16.90	10.50	8.40±0.20	3.60±0.20
RM8	22.75±0.50	8.20±0.20	10.80±0.25	19.30±0.40	16.90	10.50	8.40±0.20	5.50±0.20
RM8/5.8 5	22.75±0.50	5.85±0.10	10.80±0.25	19.30±0.40	16.90	10.50	8.40±0.20	3.35+0.35
RM8/5.5	22.75±0.50	5.55±0.10	10.80±0.25	19.30±0.40	16.90	10.50	8.40±0.20	3.25+0.35
RM8H	22.75±0.50	8.40±0.15	10.80±0.20	19.30±0.40	16.90	10.50	8.40±0.20	5.80±0.15
RM8CH	22.75±0.50	8.60±0.15	10.80±0.20	19.30±0.40	16.90	10.50	8.40±0.20	5.95±0.15
RM8-1/5.7	22.75±0.50	8.20±0.15	10.80±0.20	19.30±0.40	16.90	10.50	8.40±0.20	5.5±0.15
RM10	27.85±0.65	9.30±0.20	13.25±0.25	24.15±0.55	21.20	13.00	10.70±0.25	6.35±0.20
RM10/12	27.85±0.65	5.8±0.05	13.25±0.25	24.15±0.55	21.20	13.00	10.70±0.25	3.40±0.15
RM10D	29.45±0.65	8.80±0.15	13.25±0.25	25.28±0.55	23.25 ±0.45	/	10.70+0.15 /-0.10	6.10+0.20 /-0.10
RM12	36.85±0.75	12.25 ±0.15	15.85±0.25	29.2±0.55	25.45 ±0.55	/	12.60+0.15 /-0.20	8.55+0.20 /-0.15
RM12 J	36.85±0.75	11.75 ±0.15	15.85±0.25	29.2±0.55	25.45 ±0.55	/	12.60+0.15 /-0.20	8.60+0.20 /-0.15

Type: 1)RM6—RM-ⓐ;

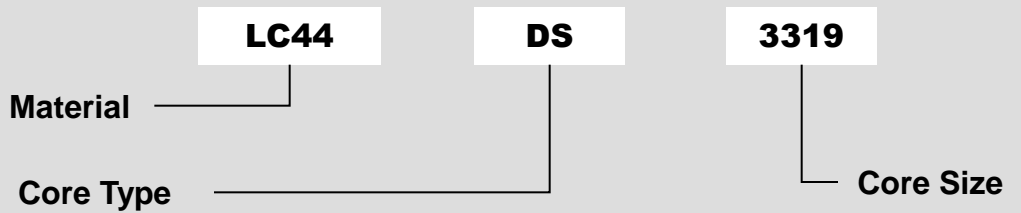
2 )Others—RM ⓑ



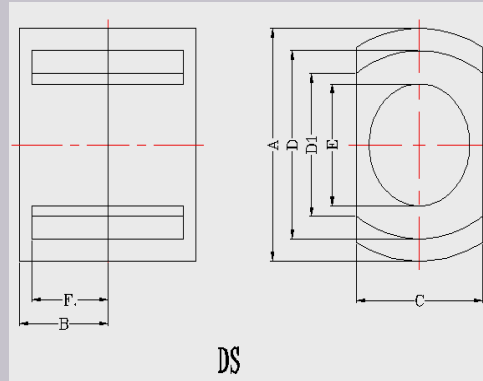
# DS CORES

DS30~DS50

## Ordering Code System

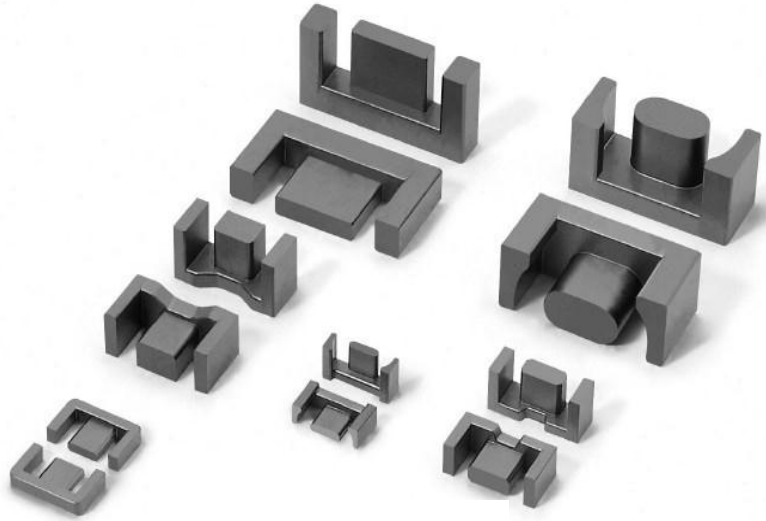


# DS CORES



Part NO.	A	B	C	D	D1	E	F
DS3012.5	$30.00 \pm 0.50$	$6.30 \pm 0.15$	$20.30 \pm 0.30$	25.00min	17.80min	$13.3 \pm 0.20$	$3.5 \pm 0.20$
DS3019	$30.00 \pm 0.50$	$9.45 \pm 0.15$	$20.30 \pm 0.30$	25.00min	17.80min	$13.3 \pm 0.20$	$6.65 \pm 0.20$
DS3316	$33.60 \pm 0.50$	$8.0 \pm 0.15$	$23.70 \pm 0.30$	26.60min	17.8min	$13.40 \pm 0.25$	$5.25 \pm 0.15$
DS3319	$33.20 \pm 0.50$	$9.40 \pm 0.15$	$23.70 \pm 0.30$	26.20min	17.8min	$13.40 \pm 0.20$	$6.50 \pm 0.20$
DS5025	$49.6 \pm 0.50$	$11.9 \pm 0.20$	$34.10 \pm 0.40$	38.9 Min	23.5min	$21.80 \pm 0.25$	$7.30 \pm 0.20$

**Note:** The type of the products listed above is DS



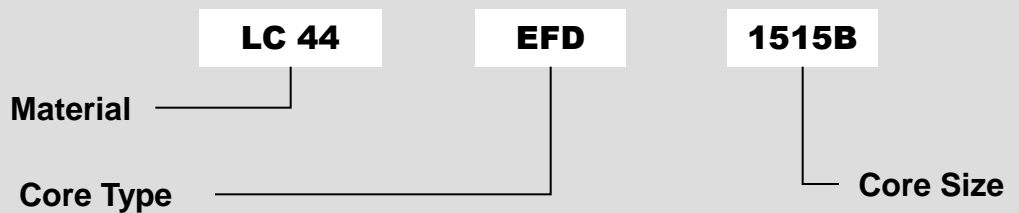
## LOW PROFILE CORES

EFD15~EFD31

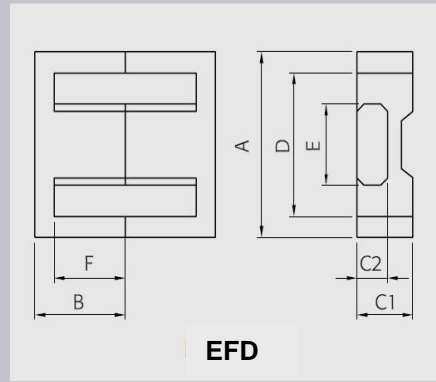
EM 13~EM 16

EPC13~EPC19

Ordering Code System



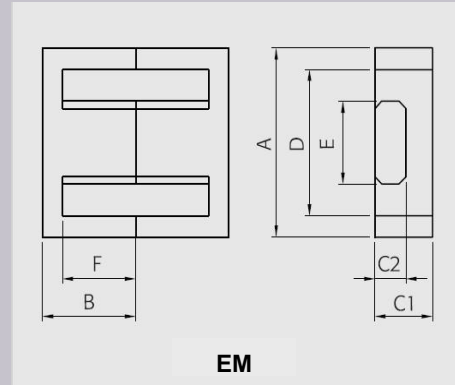
# EFD CORES



Part NO.	A	B	C <sub>1</sub>	C <sub>2</sub>	D	E	F
<b>EFD1514H</b>	15.00±0.30	7.10~7.35	4.70±0.20	2.35±0.20	10.5min	5.30±0.20	5.25~5.40
<b>EFD1515</b>	15.30±0.30	7.90±0.20	4.70±0.20	2.35±0.15	10.7min	5.30±0.20	5.90±0.20
<b>EFD1515B</b>	15.00±0.30	7.50±0.20	4.70±0.20	2.35±0.20	10.5min	5.30±0.20	5.50±0.20
<b>EFD1615</b>	16.00±0.40	7.90±0.20	4.65±0.20	2.30±0.15	11.5min	5.25±0.20	5.90±0.20
<b>EFD1816</b>	17.70±0.30	8.30±0.20	6.30±0.20	3.70±0.20	12.6min	7.50±0.20	5.90±0.20
<b>EFD2020</b>	20.20±0.40	10.40±0.20	6.70±0.20	3.60±0.15	14.8min	8.90±0.20	8.00±0.20
<b>EFD2120</b>	20.80±0.50	10.40±0.20	6.70±0.20	3.60±0.15	15.7min	8.90±0.20	8.00±0.20
<b>EFD25</b>	25.40±0.60	12.95±0.20	9.10±0.30	5.20±0.20	18.7min	11.4±0.20	9.55±0.20
<b>EFD26</b>	25.80±0.60	12.95±0.20	9.10±0.30	5.20±0.20	19.55min	11.4±0.20	9.55±0.20
<b>EFD3130</b>	30.90±0.80	15.10±0.20	9.10±0.25	4.90±0.20	23.4min	14.60±0.25	11.30±0.2

**Note:** The type of the products listed above is EFD

# EM CORES



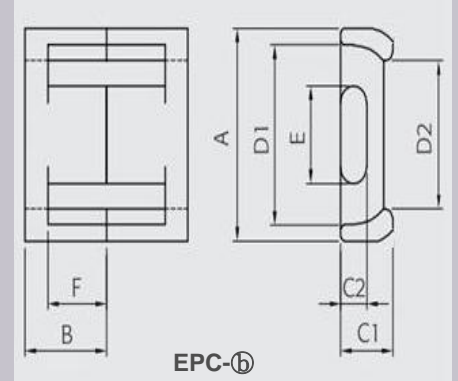
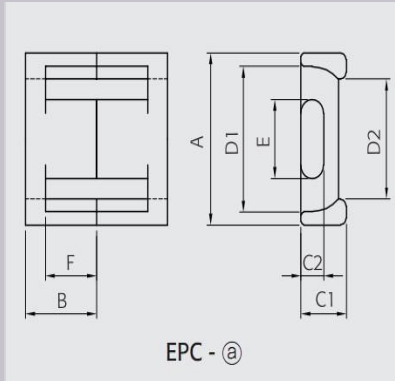
EM

Part NO.	A	B	C	C1	D	E	F
EM12.6	12.65±0.30	6.30±0.15	4.05±0.10	2.00±0.15	9.40min	4.95±0.15	4.75±0.15
EM12.9	12.80±0.25	5.75±0.15	6.70±0.20	4.85±0.15	9.60min	4.25±0.20	4.00±0.15
EM13	13.00±0.30	6.20±0.15	4.00±0.20	2.00±0.15	9.60min	5.20±0.20	5.00±0.15
EM15H	15.50±0.30	6.80±0.20	5.00±0.20	2.30±0.15	11.70min	6.30±0.20	4.75±0.15
EM15	15.50±0.30	6.60+0.20 /-0.10	5.00±0.20	2.30±0.10	11.70min	6.30±0.15	4.60+0.20 /-0.10
EM15-A	15.50±0.30	6.80±0.20	5.00±0.20	2.30±0.10	11.70min	6.30±0.15	4.90±0.20
EM16.5	16.60±0.30	7.50±0.20	4.40±0.20	2.80±0.20	11.60min	5.80±0.20	4.40±0.20
EM1615	16.40±0.30	7.60±0.20	5.00±0.20	2.50±0.20	12.50min	5.95±0.20	5.50±0.20
EM2222	22.20±0.40	11.15±0.20	7.90±0.20	5.40±0.15	16.40min	8.40±0.15	8.30±0.20

**Note:** The type of the products listed above is EM



# EPC CORES



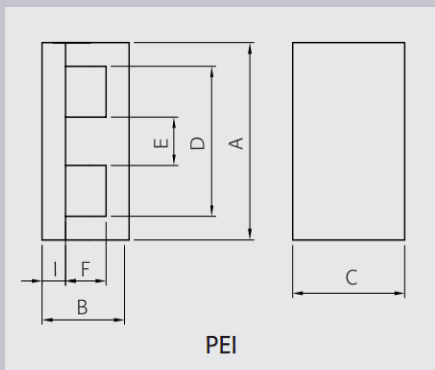
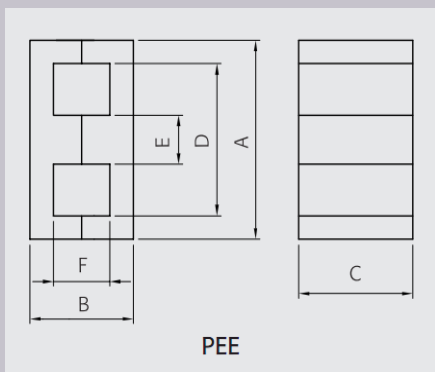
Part NO.	A	B	C <sub>1</sub>	C <sub>2</sub>	D <sub>1</sub>	D <sub>2</sub>	E	F
EPC13	13.50 ±0.30	6.75 ±0.20	4.60 ±0.20	2.05 ±0.20	10.50min	8.50min	5.60 ±0.20	4.65 ±0.20
EPC14	13.90 ±0.30	6.75 ±0.20	4.60 ±0.20	2.05 ±0.20	10.8min	9min	5.60 ±0.20	4.65 ±0.20
EPC14A	13.90 ±0.30	6.75 ±0.20	4.65 ±0.20	2.10 ±0.10	10.90min	9.10min	5.60 ±0.20	4.65 ±0.15
EPC1715	17.60 ±0.40	8.05 ±0.20	6.00 ±0.30	2.80 ±0.20	14.30min	11.50min	7.70 ±0.20	5.55 ±0.20
EPC1716	17.90 ±0.30	8.50 ±0.20	6.70 ±0.30	3.65 ±0.15	14min	10.5min	7.75 ±0.20	5.55 ±0.20
EPC17	17.80 ±0.40	8.75 ±0.20	6.70 ±0.30	3.65 ±0.15	15.1min	12.3min	7.75 ±0.20	6.25 ±0.20
EPC17SA	17.50 ±0.30	4.45+0.20 /-0.10	8.50 ±0.20	3.80 ±0.15	14.00min	10.50min	7.70 ±0.15	3.10+0.20 /-0.10
EPC17SC	17.50 ±0.30	4.90 ±0.20	8.50 ±0.20	3.80 ±0.15	14.00min	10.50min	7.7 ±0.15	3.10+0.2 /-0.1
EPC19	19.60 ±0.50	9.75 ±0.20	6.00 ±0.20	2.50 ±0.15	15.90min	12.90min	8.50 ±0.15	7.25 ±0.20

**Type:** The type of EPC14A is EPC-ⓑ, others are EPC-ⓐ

# PLANER CORES



Part No.	PEI22	PEE221814	PEE32	PEE40	
Type	PEI	PEE	PEE	PEE	
Dimensions in mm	A	22.00 ±0.30	22.00 ±0.40	32.80 ±0.40	40.50 ±0.50
	B	5.60 ±0.15	9.00 ±0.20	8.30 ±0.20	7.50 ±0.20
	C	15.90 ±0.15	14.00 ±0.25	16.30 ±0.30	16.00 ±0.35
	D	16.75 min	16.90 min	27.00 min	34.60 min
	E	5.00 ±0.15	5.00 ±0.25	5.30 ±0.20	5.40 ±0.20
	F	3.10 ±0.15	6.50 ±0.15	5.60 ±0.20	4.75 ±0.20
	I	2.50 ±0.15			



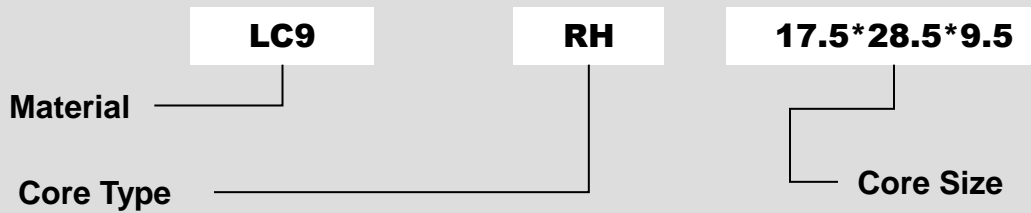


# EMI CORES

RH16~RH31

SCRC35B~130B/A

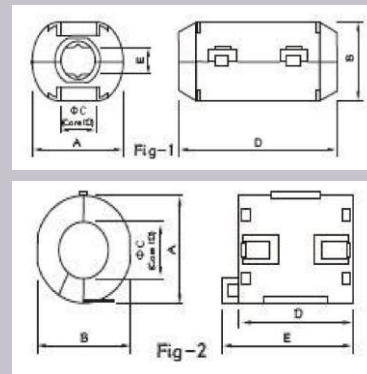
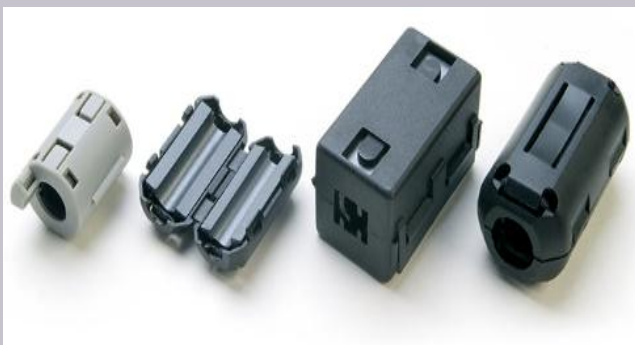
## Ordering Code System



# PLANER CORES



Part NO.	A	B	C
RH17.5*28.5*9.5	17.50±0.70	28.50±0.80	9.50±0.70
RH25.9*29*13	25.90±0.70	29.00±0.80	13.00±0.70
RH31*30*19	31.00±0.70	30.00±0.80	19.00±0.50



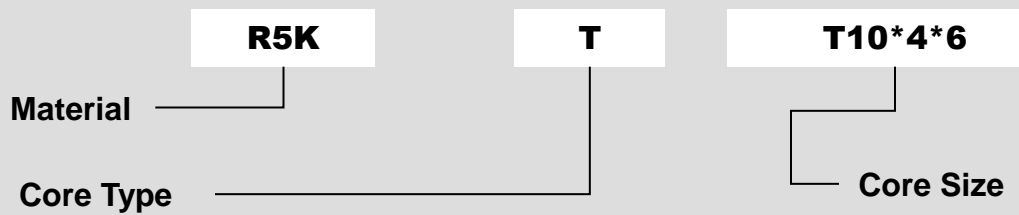
Part NO.	A	B	C	D	E
35B(1)	13.00±1.00	11.50±1.00	5.00±1.00	25.00±1.00	2.50±1.00
70A(2)	15.50±1.00	14.00±1.00	7.00±1.00	18.00±1.00	22.0±1.00
70B(1)	16.50±1.00	14.00±1.00	7.00±1.00	30.00±1.00	
90B(1)	19.50±1.00	18.00±1.00	9.00±1.00	35.00±1.00	5.50±1.00
110A(2)	20.50±1.00	20.50±1.00	11.00±0.60	36.00±1.00	
1330B(1)	23.50±1.00	22.20±1.00	13.50±0.80	36.00±1.00	
130(2)	29.00±1.00	30.00±1.00	13.00±0.80	32.00±1.00	



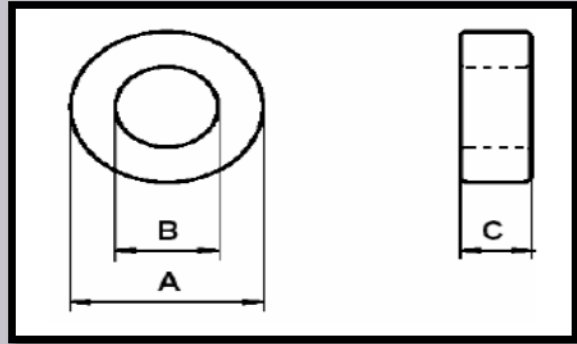
# T CORES

T6~T140

## Ordering Code System



# PLANER CORES



型号Type	尺寸Dimensions (mm)			有效参数Effective Parameters				重量Weight	R5K	R7K	R10K	R12K
	A	B	C	C1(mm <sup>-1</sup> )	Le(mm)	Ae(mm <sup>2</sup> )	Ve(mm <sup>3</sup> )	(g/pc)				
T12.7/7.92/6.35	12.70±0.40	7.92±0.30	6.35±0.30	2.13	32.4	15.2	491	2.35	2990	3800	5500	6300
T14/8/7	14.00±0.40	8.00±0.30	7.00±0.30	1.60	32.8	20.5	672	3.50	3920	5300	7500	9000
T16/12/8	16.00±0.40	12.00±0.40	8.00±0.30	2.73	43.4	15.9	689	3.40	2300	3400	4500	5200
T18/10/10	18.00±0.5	10.00±0.4	10.00±0.40	1.07	41.5	38.9	1615	8.50	5880	8000	9000	10000
T20/10/8	20.00±0.50	10.00±0.40	8.00±0.30	1.13	43.6	38.4	1674	8.80	5600	8300	11100	13300
T22/14/8	22.00±0.5	14.00±0.40	8.00±0.30	1.74	54.6	31.5	1719	8.28	3620	5000	6000	7000
T25/15/10	25.00±0.50	15.00±0.40	10.00±0.30	1.26	62.8	50.0	3141	14.70	5110	5400	6800	8900
T25/15/12	25.00±0.50	15.00±0.40	12.00±0.40	1.02	60.2	58.7	3532	18.30	6130	6400	8100	10000
T25/15/13	25.00±0.50	15.00±0.40	13.00±0.40	0.95	60.2	63.6	3828	19.80	6440	6900	8700	10000
T25/15/15	25.00±0.50	15.00±0.40	15.00±0.40	0.82	60.2	73.4	4417	22.80	7660	8000	10000	13000
T28/16/13	28.00±0.50	16.00±0.40	13.00±0.40	0.86	65.6	76.0	4988	25.20	7300	11000	14600	17500
T29/19/15	29.00±0.40	19.00±0.30	15.00±0.30	0.98	73.2	74.9	5481	26.60	6440	9020	12890	13890
T31/19/13	31.00±0.60	19.00±0.50	13.00±0.40	1.04	75.5	72.8	5493	29.00	6360	7900	12000	13000
T36/23/15	36.00±0.60	23.45±0.50	15.00±0.40	0.98	90.5	92.7	8390	41.60	6430	9000	12860	12860
T38/19/13	38.00±0.60	19.00±0.50	13.00±0.40	0.70	82.8	118.7	9820	51.70	8400	8900	13000	14000
T40/24/16	40.10±0.50	24.00±0.40	16.00±0.30	0.77	96.4	126.0	12147	59.98	8000	11200	16400	
T44.5/30/15	45.00±0.60	30.00±0.50	15.00±0.40	1.11	114.6	102.6	11691	56.00	5700	8000	11300	
T47/27/15	47.00±0.60	27.00±0.50	15.00±0.30	0.76	110.5	146.2	16156	82.50	8200	11350	16600	
T49/32/16	48.70±0.60	32.00±0.60	16.00±0.30	0.76	123.2	161.8	19900	85.00	8259	11562.42	14866	
T49/34/16	49.00±0.60	34.00±0.60	16.00±0.40	1.06	127.7	120.2	15298	87.00	5900	8500	10673	
T50/25/20	50.00±0.80	25.00±0.60	20.0±0.40	0.45	108.9	240.3	26155	145.00	13868.05	19000	24962	
T51.5/31.5/13.5	51.50±0.80	31.50±0.80	13.50±0.50	0.99	125.3	126.8	15888	80.00	6400	9500	11450	
T60/40/25	60.00±0.80	40.00±0.60	25.00±0.40	0.62	152.9	246.6	37695	190.00	10000	15000	18247	
T63/38/25	63.00±1.20	38.00±1.00	25.00±0.40	0.50	152.1	305.9	46528	234.00	12500	17700	22626	
T78/51/20	78.00±2.00	50.50±1.50	20.00±0.8	0.72	195.0	270.0	52958	273.00	8729	12220.83	15713	
T100/60/30	100.00±3.00	60.00±3.00	30.00±1.00	0.42	251.0	600.0	150600	725.00	15036	21050.24	27065	
T102/65/15	102.00±3.00	65.00±3.00	15.00±1.00	0.93	253.6	272.9	69209	365.00	6758	9461.29	11489	
T107/65/25	107.00±3.00	65.00±3.00	25.00±1.00	0.50	259.3	514.3	133363	710.00	12470	17458.33	22446	
T140/106/25	140.00±3.00	106.00±3.00	25.00±1.00	0.90	381.5	422.2	161057	820.00	6960	9744.186	12528	